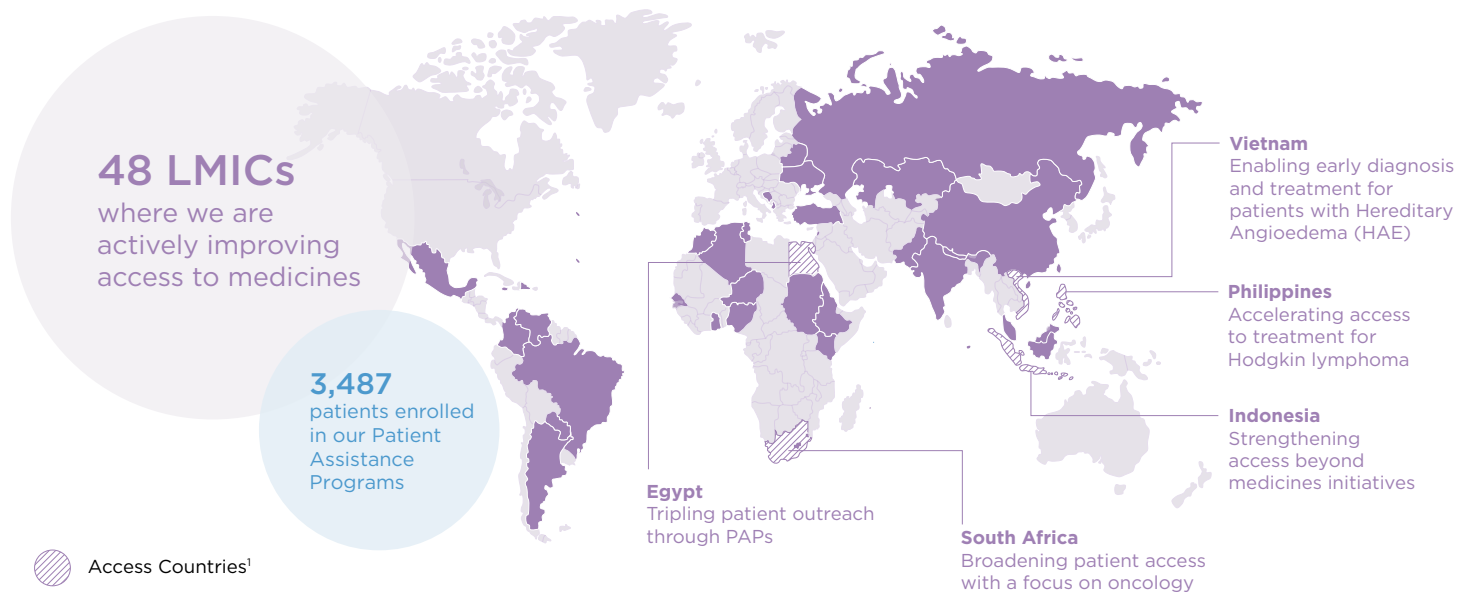


Broadening Access, Creating Impact

Progress highlights in low- and middle-income countries (LMICs)
July 2020 - March 2022

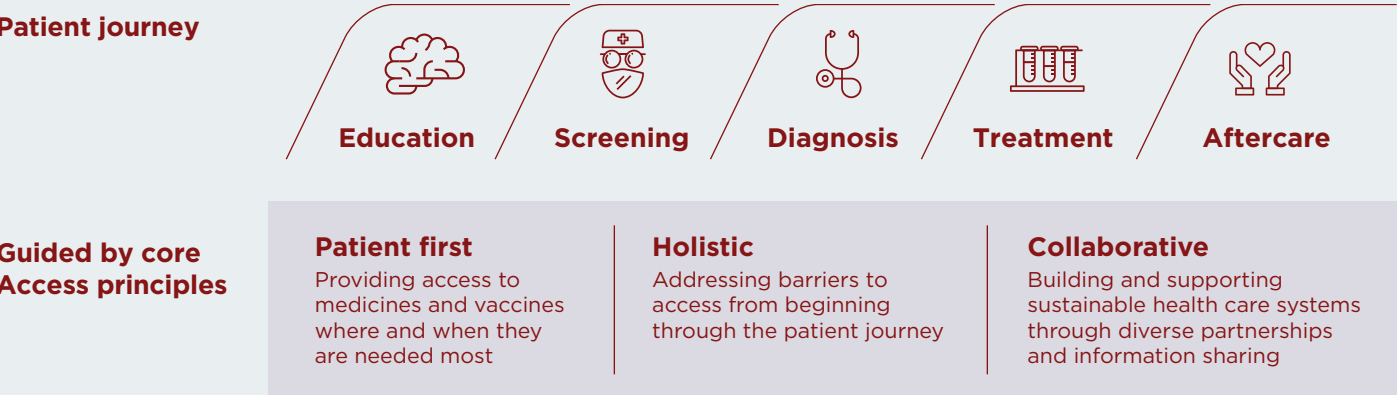
We're very proud of the progress we've made over the past two years to broaden access to medicines, particularly in view of the challenges posed by the COVID-19 pandemic. Together with our partners, we've acted on our commitment to strengthen local health care systems and address barriers to access at each stage of the patient journey.

Countries where we have Access to Medicines programs

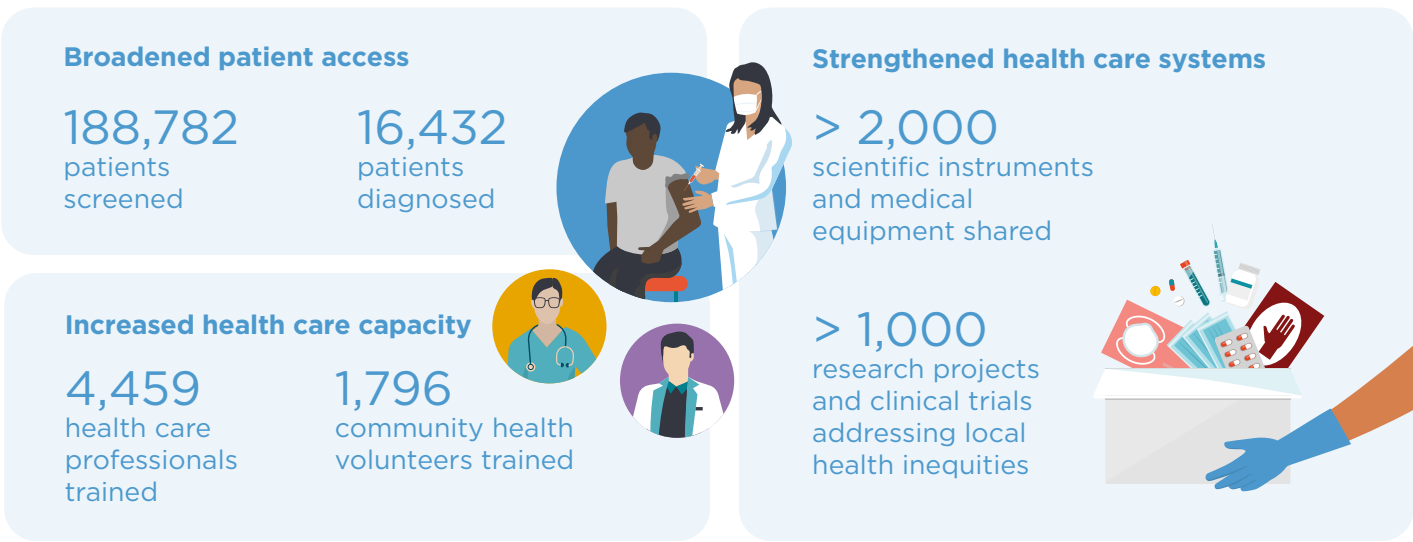


¹ These countries with evolving health care systems have been specifically identified as 'Access Countries' whereby the business strategy is focused on pro-actively investing to strengthen health care systems

Our Access to Medicines approach



Our progress in sub-Saharan Africa²



² Based on Takeda's internal data

Our future priorities

