

# A Global Biopharmaceutical Company



\* Convenience translation of reported JPY figures into USD at an average rate of 106 JPY/USD.

R&D INVESTMENT APPROX.  
**\$4.7 BN PLANNED FOR FY21**  
USD calculated at JPY/USD of 110.6

PRESENCE: APPROX. IN  
**80 COUNTRIES & REGIONS**  
AS OF MARCH 2021

**31** MANUFACTURING SITES      **3** RESEARCH SITES

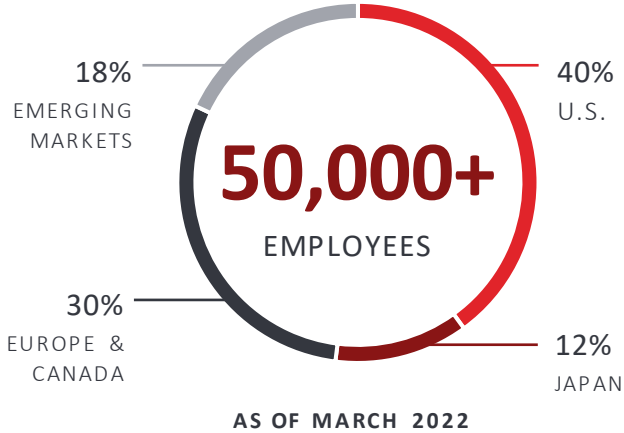
GLOBAL HUB  
**CAMBRIDGE, MA, USA**

TSE: 4502 / NYSE: TAK

FOUNDED IN  
**1781**  
 OSAKA, JAPAN  
 HEADQUARTERS IN  
**TOKYO, JAPAN**

TOP EMPLOYER® IN  
**39**  
 COUNTRIES & 4 REGIONS  
AS OF JANUARY 2022

**52% WOMEN**  
**48% MEN**  
AS OF MARCH 2022



**OUR PEOPLE**

# Our Corporate Philosophy



**Purpose** Better health for people, brighter future for the world.

**Vision** Discover and deliver life-transforming treatments, guided by our commitment to patients, our people and the planet.

**Values: Takeda-ism** We are guided by our values of Takeda-ism which incorporate **Integrity, Fairness, Honesty and Perseverance**, with Integrity at the core. They are brought to life through actions based on **Patient-Trust-Reputation-Business**, in that order.

## Imperatives

### PATIENT

- Responsibly translate science into highly innovative, life-changing medicines and vaccines
- Accelerate access to improve lives worldwide

### PEOPLE

- Create an exceptional people experience

### PLANET

- Protect our planet

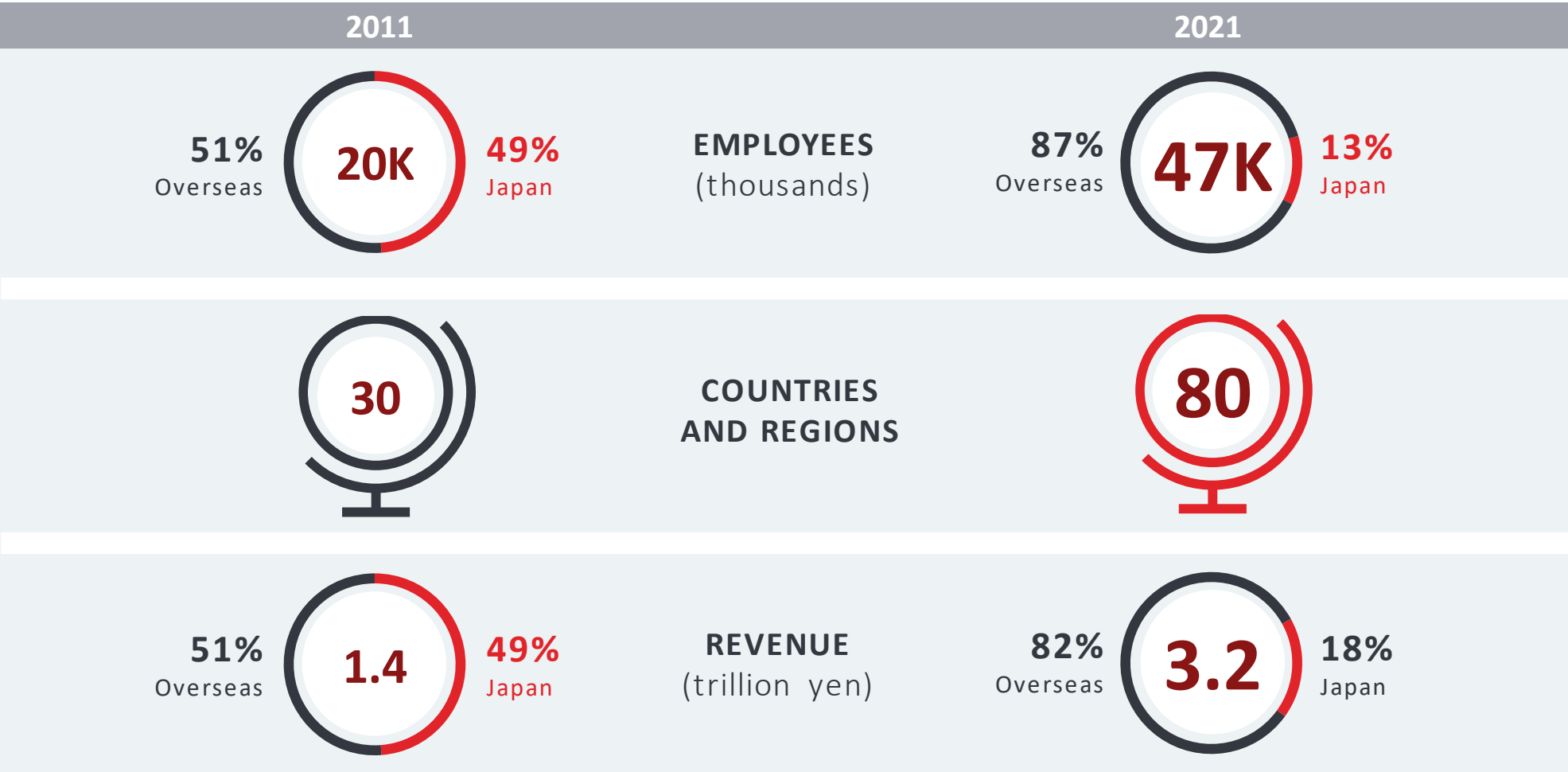
### UNLEASH THE POWER OF DATA AND DIGITAL

- We strive to transform Takeda into the most trusted, data-driven, outcomes-based biopharmaceutical company



# Our Journey to Globalize

Over the past decade, we've transformed Takeda into a top-tier global biopharmaceutical company positioned for long-term business growth. As part of our bold strategy to reach more patients globally, we completed the largest foreign acquisition in Japanese history giving us worldwide scale, built one of the most exciting R&D pipelines in the industry and continue to expand our strong portfolio of global brands.



**90%**  
of the medicines in our pipeline did not exist six years ago  
(2016 to 2022)

# 20+ conditions treated with our medicines and vaccines



We are focused on key areas of unmet needs, including patient identification and diagnosis, digital health and devices, and integrated evidence-based solutions.

## NEUROSCIENCE

- Attention-Deficit Hyperactivity Disorder (ADHD)
- Major Depressive Disorder (MDD)

## ONCOLOGY

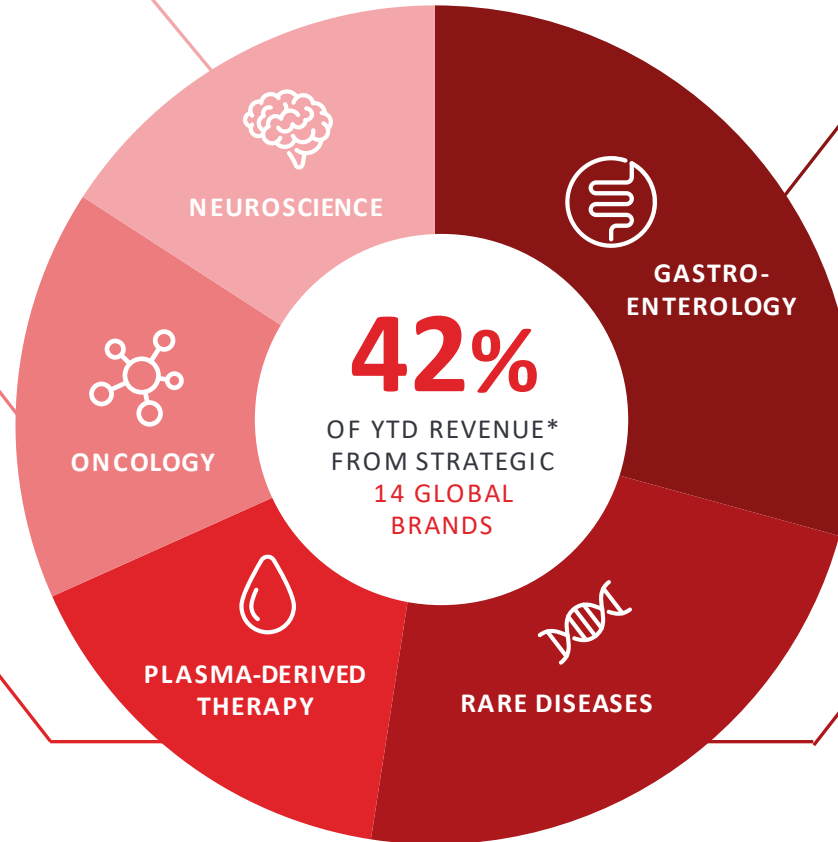
- Multiple Myeloma
- Non-Small Cell Lung Cancer

## PDT IMMUNOLOGY

- Immunodeficiency and autoimmune diseases
- Primary immunodeficiency (PI)
- Alpha-1 Antitrypsin Deficiency

## VACCINES<sup>1</sup>

- Dengue
- COVID-19



## GASTROENTEROLOGY

- Ulcerative Colitis
- Crohn's Disease
- Crohn's Disease  
Complex Perianal Fistula
- Short Bowel Syndrome

## RARE DISEASES

- Hunter Syndrome
- Type 1 Gaucher disease
- Fabry disease
- Hereditary Angioedema (HAE)
- Hemophilia A
- Von Willebrand disease
- Hypoparathyroidism
- Cytomegalovirus (CMV) infection

\*Based on YTD Revenue in Q3 FY2021 Earnings.

<sup>1</sup> Includes Partnerships and clinical program, see [current Pipeline](#) for details.

# Research and Development



At Takeda, we exist to create better health for people and a brighter future for the world. While the science and technology we advance are constantly evolving, our ambition remains. We move science forward, so we can transform more lives.



200+

## Active Partnerships

More than 60% of our pipeline is partnered allowing us to tap cutting-edge science and innovation at the source. External partnerships across start-ups, biotech and academia help us bring innovative ideas to the table.



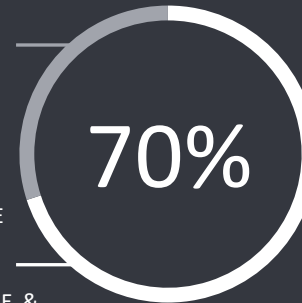
Approx.  
**40** NEW MOLECULAR ENTITY  
CLINICAL STAGE ASSETS

## Robust Clinical Pipelines of Novel Mechanisms

Approx.  
**50%** OF PIPELINE WITH ORPHAN  
DRUG DESIGNATION

SMALL  
MOLECULES

- BIOLOGICS
- CELL & GENE THERAPIES
- MICROBIOME & OTHER MODALITIES
- PEPTIDES & OLIGONUCLEOTIDES



## Diversified Modalities in Research

Advancing multiple first-in-class immunotherapy candidates in blood cancers and solid tumors, as well as clinical momentum in rare diseases in children.



APPROX.  
**\$4.7 Bn**  
PLANNED FOR FY21

## R&D Investment

In addition to late-stage programs with potential to launch multiple products in the near-term, critical programs in earlier stages of development provide sustainable long-term opportunities.

# Our Digital Growth



- **IT INFRASTRUCTURE**

PDT is building a data and digital first business

- **VIRTUAL REALITY**

Used in manufacturing interviews and training

- **AUGMENTED REALITY**

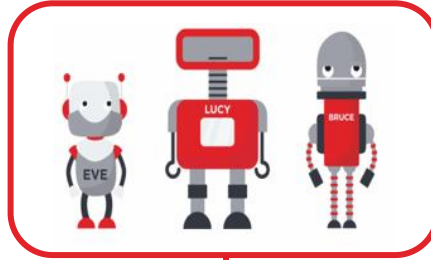
For meetings with oncology HCPs in Japan

- **AI COLLABORATION**

Takeda and MIT team up to solve specific business challenges

- **AUTOMATION**

Employees empowered to transform digital processes with Robotic Process Automation (RPA).



**MIT-Takeda Program**

Our digital transformation across the business has and will continue to advance how we deliver care.

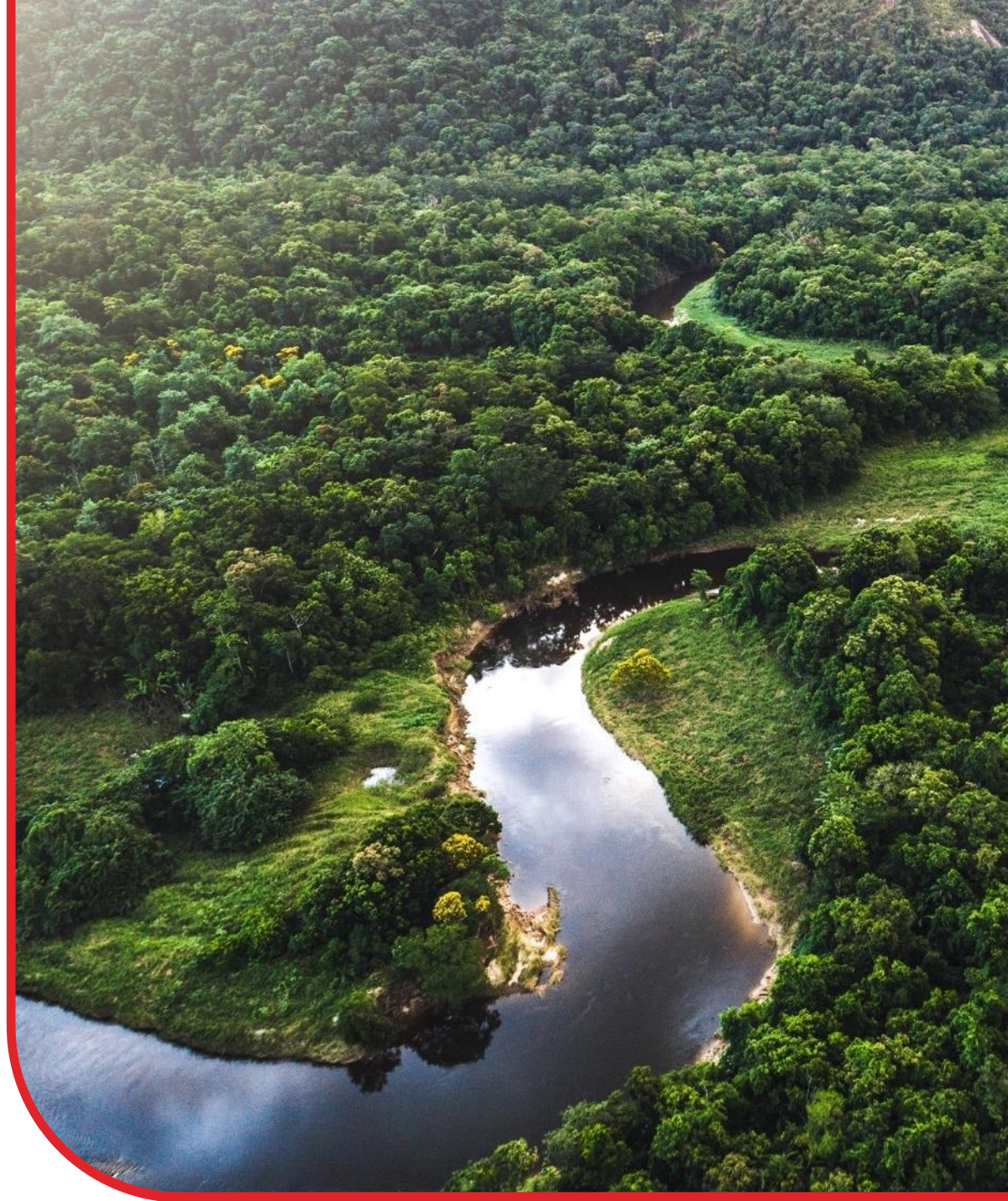


# SUSTAINABLE VALUE DRIVEN BY ESG

Protecting our shared environment and advancing innovation in environmental sustainability is a priority.

We recognize that risks to the health of the environment pose risks to human health, including the spread of some of the same infectious diseases we're working to eradicate.

We are proud to have been recognized with an 'A-' for climate change leadership by the CDP





# Our actions to protect the environment...



## Achieved and maintained Carbon Neutrality

across our value chain by FY2020



## 67% of suppliers by emissions

will establish science-based targets by FY2024



## 40% reduction of our greenhouse gas emissions by FY2025

(from FY2016 baseline)

2021

### 100% Renewable Energy Japan

Several of our Japanese sites purchase 100% renewable electricity, which will result in 30% annual reduction of CO<sub>2</sub> emissions



### Natural Gas to Green Steam Cambridge, Massachusetts, U.S.

Conversion will reduce operational greenhouse gas emissions by 40-50%



### Solar Installation Los Angeles, California, U.S.

Annual reduction of electricity purchases by ca. 833 MWh and elimination of GHG emissions by 280 metric tons of CO<sub>2</sub> eq.



### Zero Energy Building Singapore

Ground-breaking for first zero carbon emissions building following the Singapore zero energy building scheme





# ...are aligned with global commitments



**50% of paper and fiberboard packaging by FY2025**

recycled or forest stewardship certified on secondary and tertiary level



**90% waste diversion from landfill**

By FY2025



**50% reduction in supplier emissions by FY2040**

(from FY2018 baseline)



**Net-Zero by FY2035 in our own operations**



2035

**90% of Water Recycled**  
Lessines, Belgium

First large-scale wastewater recycling facility of its kind to be used in the pharmaceutical industry



**Supplier Collaboration**  
Energize Program

A first-of-its-kind initiative by 10 pharma companies to increase access to renewable energy sources for suppliers



**Sustainability by Design**  
Lead to Industry-First Process

Applying "Green Chemistry" Principles to R&D process led to reducing water usage in the manufacturing process

